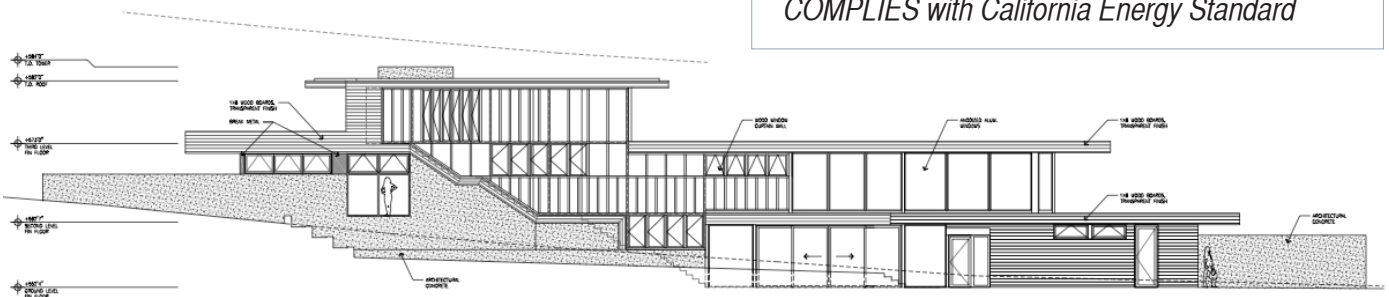


# Residential Title 24

## Services for Design-Oriented Architects

*Glazing to Floor Area: 75%*  
*Custom Window Wall*  
*COMPLIES with California Energy Standard*



Design Courtesy Swatt|Miers Architects

Green Compliance Plus provides California Energy compliance documentation for custom residential projects by design-oriented architects. We can help you to optimize your projects for Title 24 compliance without compromising design integrity. We can also help you exceed Title 24 to qualify for LEED, GreenPoints, CalGreen, and rebate incentives.

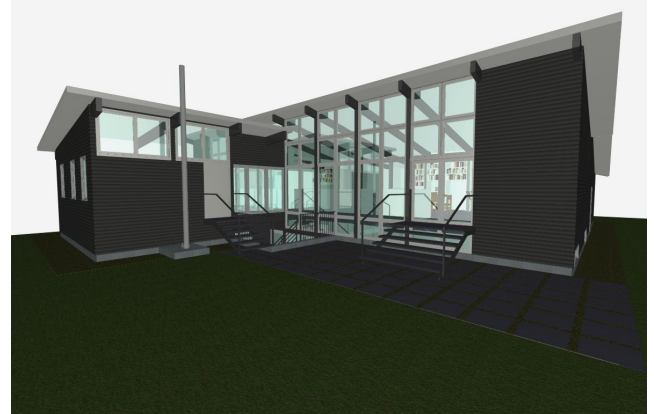
We are a division of Mark English Architects, a San Francisco-based firm. In addition to running his own design practice since 1992, Mark English, AIA, CEPE, is currently serving as Chair for the AIA-San Francisco Small Firms Committee, as well as serving on the AIA-SF Board of Directors.

*Glazing to Floor Area: 45.7%*  
*EXCEEDS California Energy Standard by 22%*



Design Courtesy Swatt|Miers Architects

*Modern Passive Solar Design*  
*GreenPoint Rated*  
*EXCEEDS California Energy Standard by 51%*



Design Courtesy Klop Architecture